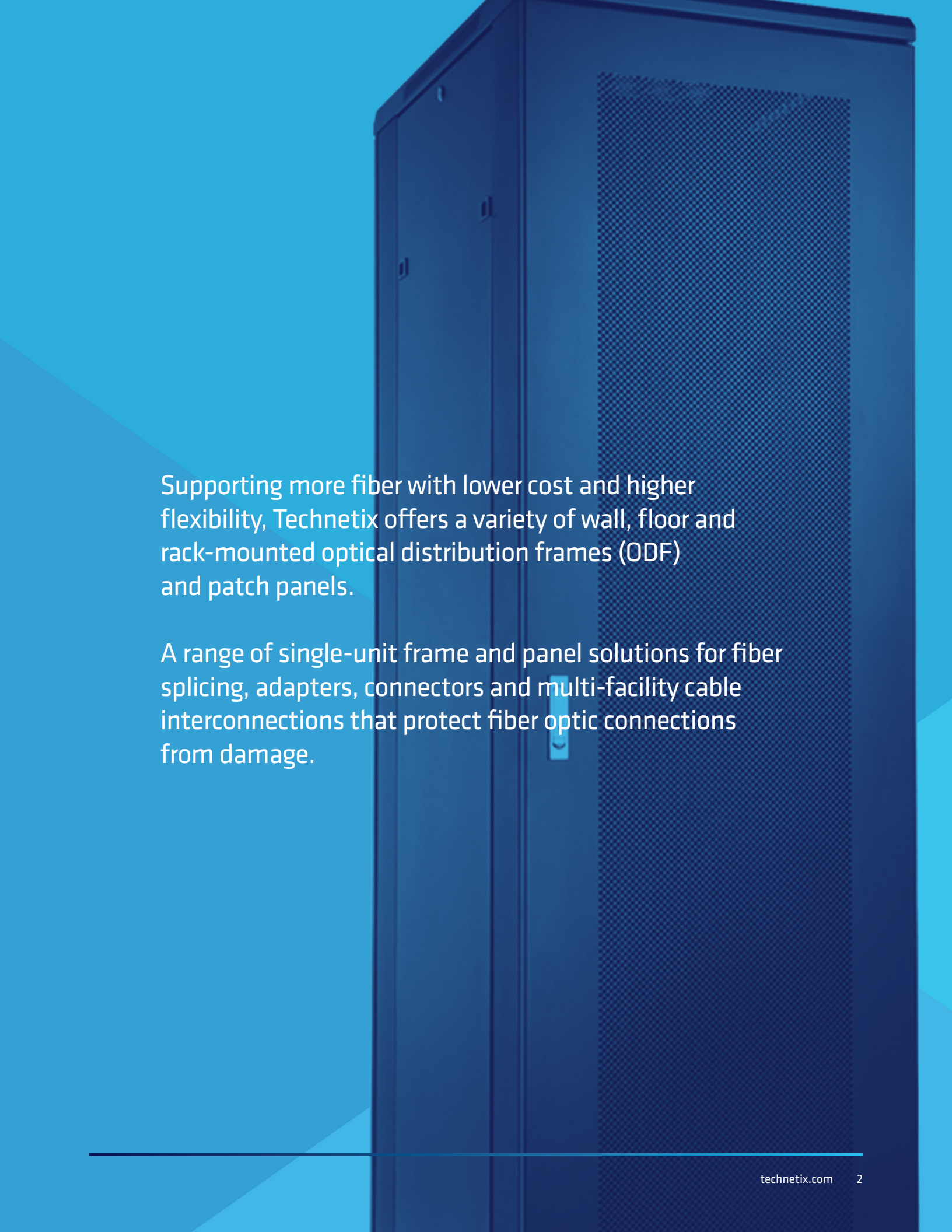


technetix

Optical distribution frames and patch panels



Supporting more fiber with lower cost and higher flexibility, Technetix offers a variety of wall, floor and rack-mounted optical distribution frames (ODF) and patch panels.

A range of single-unit frame and panel solutions for fiber splicing, adapters, connectors and multi-facility cable interconnections that protect fiber optic connections from damage.

Network cabinet (21-47 units)

Designed for high density network cables and IT equipment, these cabinets are ideal for data centers and telecommunications rooms.

Features:

- Good technical performance
- Resistant to external variables: vibration, water, dust, radiation resistant
- Stable and reliable operation
- Easy operation and maintenance
- Simple assembly and transportation
- Operator safety protection facilities
- Meets standardization requirements
- Color and application options



Parameters	Value
Dimensions (mm)	600x600 / 600x800 / 800x800
Material	Cold steel
Front door	Tempered glass door
Rear door	Single perforated door
Ac fan	2 or 4
Color	RAL9005
IP degree	IP20
Metal thickness	Top panel& base panel& frame &horizontal beam &front door& rear door:1.2 mm;Vertical rail: 2.0 mm; Side 120KGS
N.W.	120 KGS
G.W.	125 KGS
Package	Disassembled packing
Carton	Carton 1:1020*820*130 mm Carton 2:1990*820*320 mm

1 RU high-density fiber patch panel with cassettes

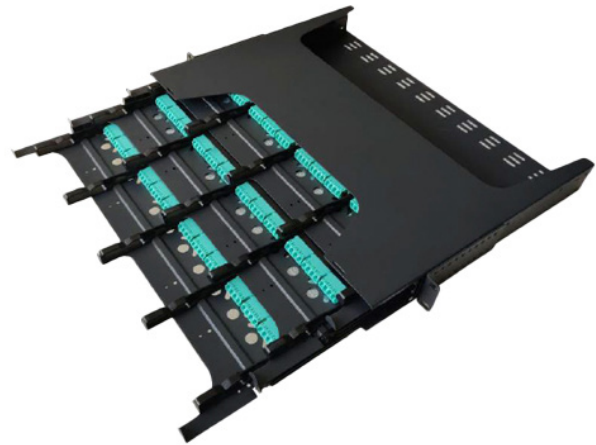
Typically installed in server cabs to support greater network availability, this patch panel is ideal for inter- and cross-connections for data center cable management with other fiber backbones and actives.



Parameters	Value
Dimensions (mm)	485 x 470 x 44
Weight (with cassette)	4.0 kg
Capacity	LC 144 cores/SC 72 cores
Operation temperature	-25°C~+70°C
Patch cord type	MPO/MTP®-LC Patch cord

1 RU high-density MPO patch panel with MTP

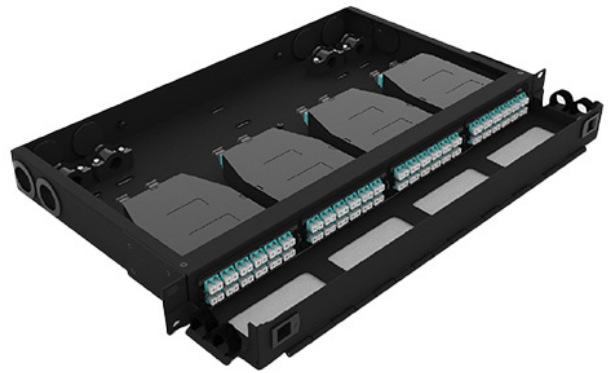
Specifically developed to manage high-density cabling systems in data center environments, this rack-mountable MTP patch panel supports up to 144 fibers within a space-saving 1U profile.



Compatible adapters	LC/MTP®-MPO
Weight (empty)	1.9 kg
Weight (packaged)	2.5 kg
MTP/MPO entry	x4
IP rating	IP20
Material	16 gauge cold rolled steel
Dimensions (mm, panel only)	424 x:222 x 44

1 RU MTP 4-cassette patch panel

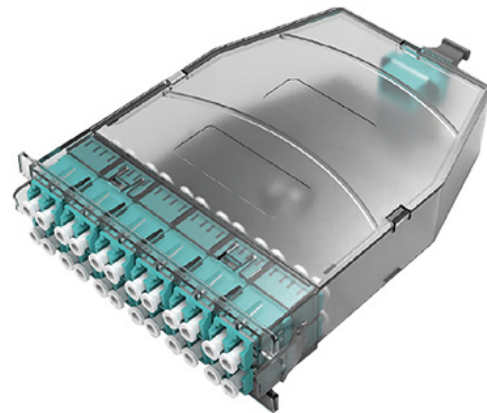
A 19" rack-mounted FTTH cable management enclosure for use as a fiber termination panel for optical fiber wiring, splicing and patching.



Compatible adapters	Value
Number of rack spaces	1 U 19"
Fiber count	Up to 96F
Body dimensions (mm)	482.6 x 218 x 44
Material	Cold rolled steel
Max depth (cm)	25

24F MTP® cassette module polarity AF

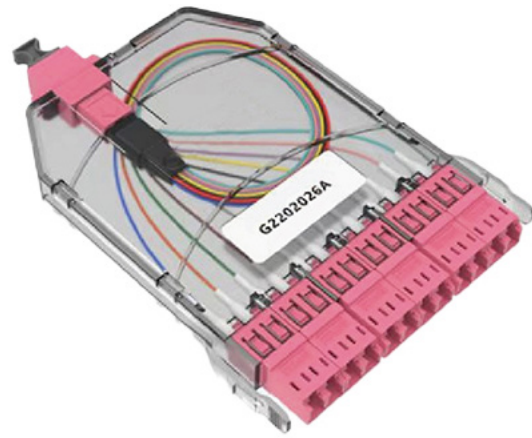
With a 24-fiber MTP adapter at the back routed to 12 duplex LC adapters on the front, this module interconnects with high-density cable assemblies for a number of applications.



Parameters	Value
Fiber mode	OM4, OS2
Dimensions (mm)	101 x 152.2 x 33
Front connector type	LC duplex
Rear connector type	MTP®
Gender	Male
Polarity	AF
Insertion loss	≤0.4 dB (max)

12F MTP® cassette module type A

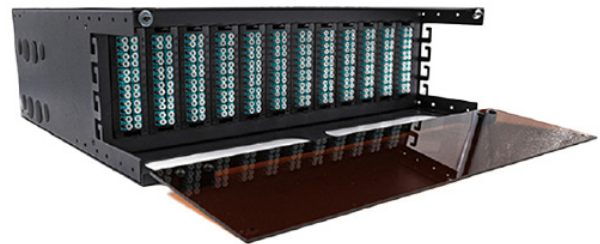
Through the 12-fiber MTP adapter at its rear routed to 6 duplex LC adapters on its front, this MTP module interconnects high density cable assemblies.



Parameters	Value
Fiber mode	G657A2
Dimensions (mm)	101×152.2×33
Front connector type	LC duplex (APC)
Rear connector type	MTP®(APC)
Gender	Male
Polarity	Type A
Insertion loss	≤0.6 dB (max)

High-density 3U MTP®/MPO patch panel

A rack-mountable high-density 3U MTP/MPO panel module supporting up to 288 fibers (for pigtail, ribbon and bunch cable distribution). An ideal solution for cabling systems in data centers and telecomms environments.



Dimensions (mm)	MPO	Max. capacity	Material
435 x 225 x 133	4 Cassettes / U	288 FO	Cold rolled steel 12pcs MPO cassette

1U patch panel with sliding rail and modular adapter

Offering a flexible end user solution with easy access for installation and maintenance, this 1U-height 19" rack-mounted fiber optic patch panel supports four modules and a variety of adapters. MPO or MTP trunk cables spliced into standard splice cassettes present standard splicing or pre-terminated solutions.



Parameters		Value
Operation Temperature		-40°C~+60°C
1Storage Temperature		-40°C~+60°C
Relative Humidity		≤85% (+30°C)
Air Pressure		70 kpa ~ 106 kpa
Dimensions (mm)		483 x 260 x 44
LGX Module	Material	SP CC (cold rolled steel sheet)
	(front)Adapter type	LC-QT ×6Pcs, SC DX ×6Pcs, LC DX ×12Pcs, SC SX ×12Pcs
	(front)Adapter color	Aqua: OM3/OM4; Beige: OM1/OM2 Blue: SM-UPC; Green: SM-APC
	(rear)Adapter type	MPO/MTP® (full flange/opposed)
	Connector A	SM: LC-UPC,0.9 mm or LC-APC,0.9 mm MM:LC-UPC,0.9 mm
	Connector B	SM: MPO/MTP® (male)-APC MM: MPO/MTP®(male)-PC
	Patch cord polarity	Type A

3U high-density fiber optic patch panel

Fixed type 3U for 19" rack-mounted applications, this high density, electrostatic powder sprayed fiber optic patch panel supports 12 MTP cassettes to connect and distribute up to 288 fibers.



Parameters	Value
Dimensions (mm)	482 x 137.5 x 353
Gross weight	5.9 kg
Material	cold roll steel
Max. capacity	12 MTP cassette

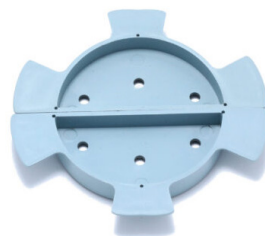
Sliding fiber patch panel

Made from high-quality steel and electrostatic spray finished, this patch panel is ideal for optical telecommunication systems, FTTH, WAN, TV networks and cable terminal branch connections.



Splice tray

Reel



Parameters	Value
Dimensions (mm)	483 x 204 x 44
Hole range	4* \square 20 mm
Colour	Black
Adapter plate (mm)	430 x 42.5

Sliding 1/2/3/4U patch panel

Incorporating multifunctional chassis for easy installation and maintenance, this panel presents a flexible end user solution capable of supporting multiple cable entry options.

Features:

- Made from 1.0-1.1 mm cold rolled steel
- 2-cable entry and exit for flexibility
- Oil-resistant NBR to seal unused cable entrances
- Expandable capacity with overlapping shrink splice trays



Parameters	Value			
	1U	2U	3U	4U
External dimensions (mm)	484/430(L) x 295(W) x 45(H)	484/430(L) x 295(W) x 86(H)	484/430(L) x 370(W) x 120(H)	484/430(L) x 370(W) x 166(H)
Box net weight	3.1 kg	4.6 kg	6.5 kg	8.5 kg
Optical fiber winding radius	≥40 mm	≥40 mm	≥40 mm	≥40 mm
Fiber length left in tray	≥1.6 m	≥1.6 m	≥1.6 m	≥1.6 m
Fiber capacity	SC simplex optic fiber adapter 24cores, SC duplex 48 cores, LC duplex 48 cores	Option1: 48pcs SC duplex adapters, 192 fibers distribution and connection Option2: 72pcs SC simplex adapters, 72 fibers distribution and connection	SC simplex optic fiber adapter 72-96cores, LC duplex 144-192 cores	SC simplex optic fiber adapter 144 cores, LC duplex 288 cores
Working temperature	- 40 °C~ + 60 °C			

For more information about the contents of this brochure, please visit:

[technetix.com](https://www.technetix.com)

© Copyright 2024 Technetix Group Limited. All rights reserved.

This document is for information only. Features and specifications are subject to change without notice. Technetix, the Technetix logo and certain other marks and logos are trade marks or registered trade marks of Technetix Group Limited in the UK and certain other countries. Other brand and company names are trade marks of their respective owners. Technetix protects its technology and designs by registering patents, trade marks and designs in Europe and certain other countries.
