

TLTX 8-way 1.2GHz taps



- 5-1218MHz
- Compact 8-way tap
- Modem Safe™ - unique surge protection and intermodulation reduction solution
- High port-to-port isolation performance
- Robust zinc die-cast housing with NiSn plating
- Exceeds EN Class A screening requirements



Overview

Products within the TLTX range offer excellent value for money. They excel both in electrical and mechanical performance. Though designed for use within indoor environments, they are also specified for use within street-side plant. With all tap ports vertically connected, they are easy to install with a tough, CPD resistant, compact housing.

All F-connector contacts meet the SCTE standards (ANSI SCTE 02 2006). The BeCu material of the inner spring has been designed for connecting coax cables with an inner core of 0.65 to 1.10 mm. It retains this elasticity and provides effective clamping force even when varying thicknesses of inner conductor are inserted in succession.

The intermodulation performance, which is an crucial factor in high level return path signals, has been greatly improved through a newly developed ferrite and specially designed circuits. The high frequency shielding exceeds Class A requirements (EN-50083-2:2012) over the whole frequency range from 5 MHz to 1218 MHz. The taps have an epoxy sealed, tongue and groove back cover to prevent ingress. The TLTX series is rated IP67.

Modem Safe™

Modem Safe is a highly effective surge protection solution for sensitive network and in-home CPE. Based on passive circuits, the technology does not rely on discharge tubes, extending the lifespan of the solution.

- Blocks high and low voltage pulses and unwanted DC voltages
- Prevents internal ferrites within the product from becoming magnetised (avoiding deterioration in the performance of CPE)
- Drives fewer reported faults
- Reduces truck rolls & Improves customer service

TLTX 8-way 1.2GHz taps

Specifications

Port(s)	Frequency (MHz)	Note Ref	11dB	14dB	17dB	20dB	23dB	26dB
Parameter: Insertion Loss (MAX)								
I/P to O/P	5 - 10	TYP		3.5	2.1	1.3	1.1	0.7
	10 - 40	-	-	4.1	2.8	1.6	1.5	1.2
	40 - 550	-	-	4.0	2.8	1.6	1.2	1.0
	550 - 862	-	-	4.2	3.2	2.0	1.5	1.2
	862 - 1006	-	-	4.5	3.8	2.4	1.8	1.4
	1006 - 1218	-	-	5.0	4.0	2.8	2.2	1.6
Parameter: Tap Loss (MAX)								
I/P to TAP	5 - 10	TYP	10.9	14.4	16.6	20.1	23.2	26.4
	10 - 40	-	11.0	15.0	17.0	20.3	24.0	27.0
	40 - 550	-	11.0	15.0	17.0	20.3	24.0	27.0
	550 - 862	-	11.5	15.2	17.5	20.5	24.3	27.3
	862 - 1006	-	12.0	15.5	18.0	20.8	24.5	27.5
	1006 - 1218	-	12.2	16.0	18.5	21.5	24.8	27.8
Parameter: Return Loss (MIN)								
All Ports	5 - 10	TYP	20.6	22.7	20.9	22.2	23.5	23.4
	10 - 15	-	20	20	20	20	20	20
	15 - 40	-	22	22	22	20	22	22
	40 - 1218	3	22	22	22	20	22	22
Parameter: Isolation (MIN)								
TAP to TAP	5 - 10	TYP	35.4	31.7	27.3	32.2	29.5	31.1
	10 - 15	-	25	25	25	25	25	25
	15 - 40	-	30	30	30	30	30	30
	40 - 862	3	30	30	30	30	30	30
	862 - 1218	-	20	20	20	20	20	20
Parameter: Directivity (MIN)								
O/P to TAP	5 - 10	TYP		34.5	39.6	47.8	36.2	46.0
	10 - 40	-	-	30	30	32	32	35
	40 - 550	-	-	28	29	30	30	32
	550 - 862	-	-	24	26	26	27	30
	862 - 1006	-	-	24	26	26	26	28
	1006 - 1218	-	-	24	26	26	26	28

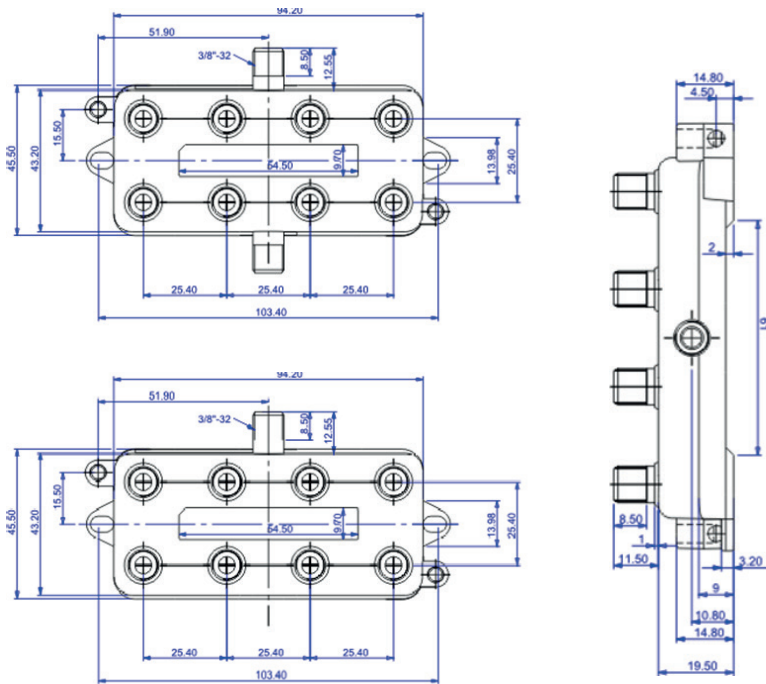
Remarks

1	IEEE-C62.14, Combination Wave, Category B1 (rise time 1,2 μS/ fall time 50 μS). No degradation allowed.
2	IEC 62153-7 § 5.5v
3	F > 40 MHz -1.5 dB/oct (Not exceeding 14dB)
4	IEC 60728-4 2007
5	Performance measured at 22°C
TYP	Typical Values

TLTX 8-way 1.2GHz taps

Mechanical & environmental specifications

Port sealing	Environmental (epoxy) seal	All F-ports
Connectors	Input, output & tap ports	F-female
Materials	Housing & back Lid	NiSn plated zinc die-cast
	F-spring	Silver plated beryllium copper
WEEE (2002/96/EC)	Complete product	Marked with wheelie bin logo
RoHS (2002/95/EC)	Complete product	Complies to RoHS
Ingress protection	BS EN 60529 1992	IP68



Ordering information

Item name	Article number	Description
TLTX-8-11T	19009702	INDOOR TAP 8-WAY 11DB TERMINATED 1.2GHZ
TLTX-8-14	19009703	INDOOR TAP 8-WAY 14DB 1.2GHZ
TLTX-8-17	19009704	INDOOR TAP 8-WAY 17DB 1.2GHZ
TLTX-8-20	19009705	INDOOR TAP 8-WAY 20DB 1.2GHZ
TLTX-8-23	19009706	INDOOR TAP 8-WAY 23DB 1.2GHZ
TLTX-8-26	19009707	INDOOR TAP 8-WAY 26DB 1.2GHZ